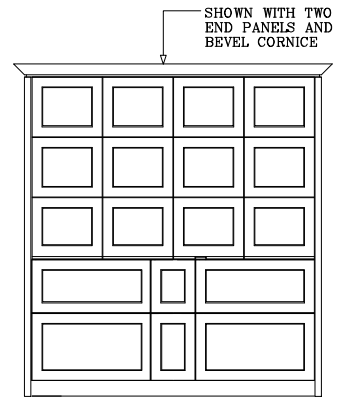
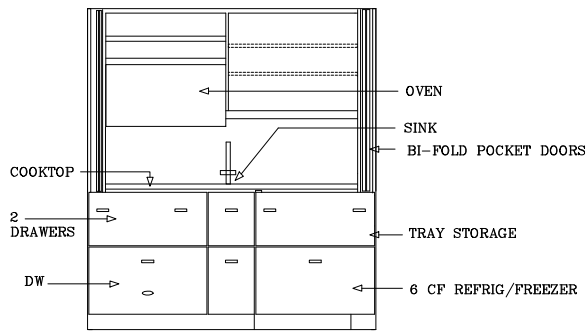
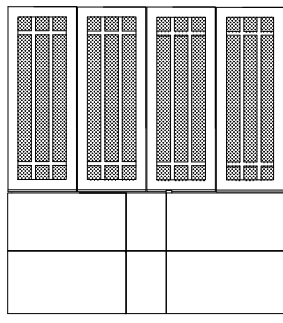


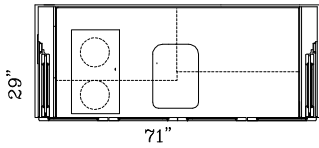
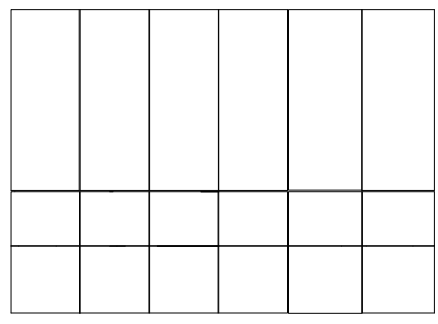
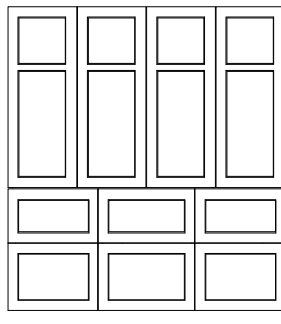
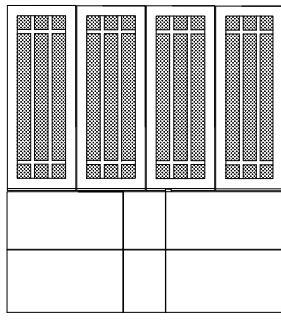
SAMPLE



WP72 SHOWN WITH FLAT PANEL DRAWERS AND 3 FLAT PANEL DOORS/

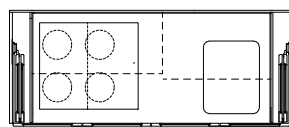
UNIT CODE: C72
(SHOWN WITH FLUSH DRAWERS & CUSTOM GRID DOORS)

UNIT CODE (SELECT THE DESIRED UNIT CONFIGURATION)



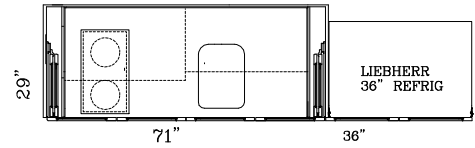
UK72 or UK72-240

UNDERCOUNTER REFRIG 11" x 16" SINK
2 BURNER COOKTOP, 120V OR 240V
OTR OVEN/MICROWAVE/HOOD, OPT. DISHWASHER



UK72-CS (NO REFRIGERATOR)

2 or 4 BURNER COOKTOP REQUIRES 240V POWER
14" X 18" SINK, OPT. DW, OTR OVEN/MICRO/HOOD
COMBINE WITH ADDITIONAL REFRIGERATOR
MODULE



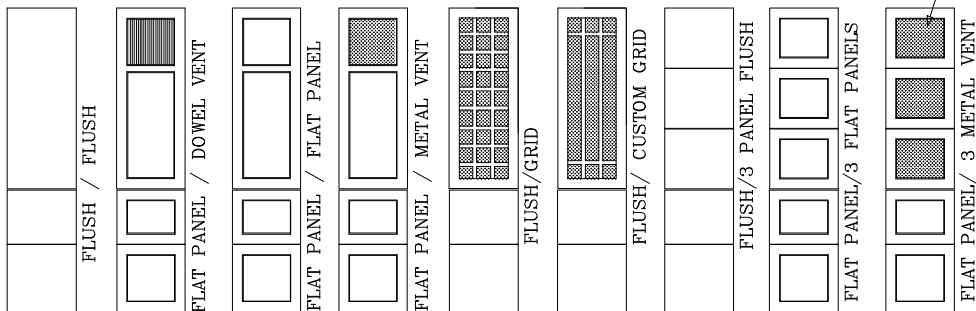
UK72-MK

(NO REFRIGERATOR)
2 BURNER COOKTOP 120 OR 240V, 11" X 16" SINK
OPT. DISHWASHER, OVEN/MICRO/HOOD

R36

C72-24 (NO REFRIGERATOR)

SAME AS ABOVE BUT INCLUDES
UNDERCOUNTER 24" OVEN



PAINTED PERFORATED ALUMINUM PANELS

7. DOOR STYLE

8. DRAWER STYLE

2. CORNICE STYLE

