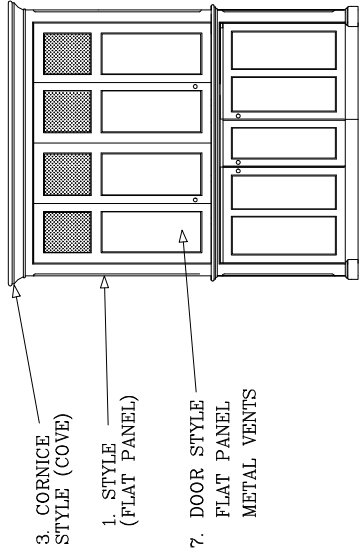
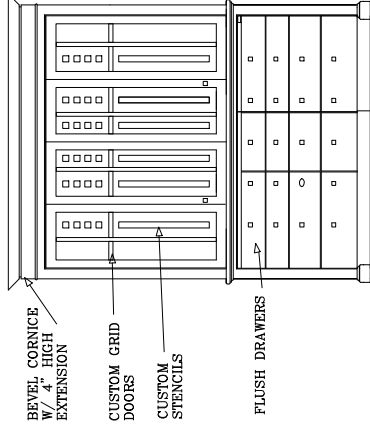


SAMPLE

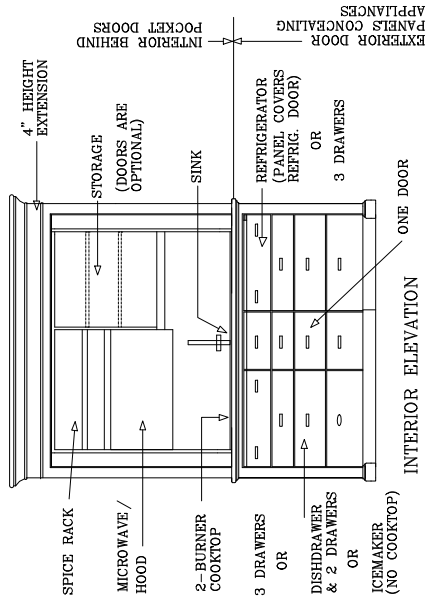


UNIT CODE: UK68B-CR-MH
(SHOWN WITH ALL LOWER DOOR OPTION)

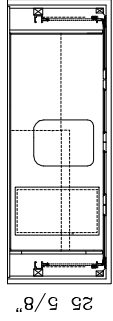


CUSTOM DESIGN DOORS
HARDWARE BY OTHERS

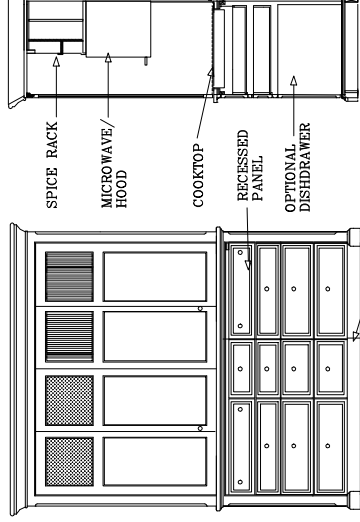
UNIT CODE (SELECT THE DESIRED UNIT CONFIGURATION)



INTERIOR ELEVATION



PLAN



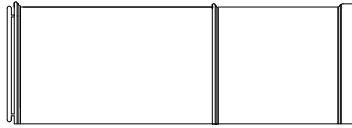
FRONT ELEVATION

UK68B-CR-M/H
(COOKTOP, SINK, REFRIGERATOR/
FREEZER AND MICROWAVE/HOOD
ABOVE)

UK68B-SR
(SINK & REFRIGERATOR ONLY)

UK68B-SRI
(SINK, REFRIGERATOR AND ICEMAKER)

1. STYLE(SIDES)

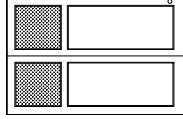


FLUSH

VERTICAL BOARD

FLAT PANEL

7. DOOR STYLE



FLAT PANEL W/
METAL
VENT

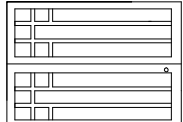
FLAT PANEL W/
DOWEL
VENT

FLAT PANEL
BI-FOLD

GRID

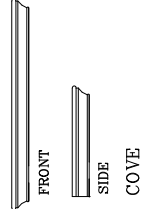
CUSTOM GRID

DESIGN YOUR
OWN PATTERN



GRID
GRID DOORS ARE 1" W X 1/2" D MEMBERS
IN A GRID PATTERN. THE VOID IS
A PAINTED PERFORATED METAL
PANEL BEHIND THE GRID

3. CORNICE STYLE



FRONT

SIDE

COVE

FRONT

SIDE

FRONT

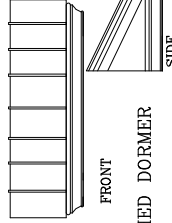
SIDE

FRONT

SIDE

USE WHEN UNIT HEIGHT
NEEDS TO FIT UNDER A
7'-0" CEILING

2" CLEARANCE



FRONT

SIDE

FRONT

SIDE

(SHOWN WITH 4" HEIGHT
EXTENSION CORNICE WITH
1/2" BEAD)

BEVEL